

# HCG & G

Hamptons Cottages and Gardens

[www.HCandG.com](http://www.HCandG.com) | SEPTEMBER 2008

## IDEA HOUSE 2008

**Luxurious  
Green Design**

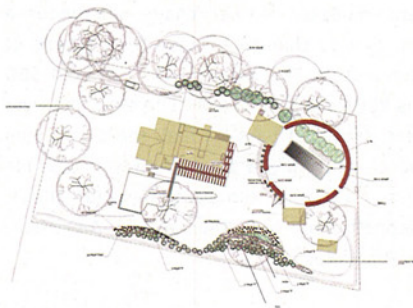
**A Garden for  
All Seasons**

**Barn Raising in  
Bridgehampton**



**LYNNE SCALO DESIGNED** the art studio for a very specific personality: “This award-winning film actress is also a young mom,” she says, “and this is her tranquil getaway from the busy Hamptons social scene—a place where she can relax and read her scripts without interruption.” Located in an outbuilding beyond the pool, the studio’s cedar-shake exterior sports a pair of custom hand-forged iron light fixtures that hang above two steel armchairs resembling silver wicker. The interior is the epitome of Hollywood

glam, only with rustic walls that have been painted a serene white—a fitting backdrop for several tranquil “Creamscape” sea paintings by Geoff Fontaine, one of which sits on a classic wooden easel. Two wing chairs in cream linen with polished silver legs sit across from a tufted sofa in a silvery linen that shimmers beneath the hive-like crystal chandelier above. Several equestrian-themed photographs hint at the actress’ love of horses, or perhaps her roles in romantic films set in the English countryside.



**Out Is In** | Located beyond the pool and pool house, Lynne Scalo’s art studio is a former outbuilding that has been restored with cedar siding and wide glass doors in the front and back. In front (ABOVE LEFT), two steel-woven chairs with seats resembling silver wicker sit under two custom sconces designed by Scalo. The deck was added for more living space. **Hollywood To Hamptons** | Fit for an actress, the interior (ABOVE RIGHT) shimmers under an antique crystal chandelier larger than a beach ball. A vintage sofa upholstered in silvery linen sits under a Creamscape painting by Geoff Fontaine. A pair of Lucite tables adds another touch of Tinseltown glitz. See Resources.

### MYTHIC PAINT

All the paint used in the Idea House, including that in the art studio, comes from Mythic, a manufacturer of non-VOC, non-carcinogenic premium Latex paint. Free of lead, mercury, formaldehyde, crystalline silica and other toxins, Mythic paints can be used even by people sensitive to chemicals. Indoor and outdoor varieties are available in 1,232 colors, which can be mixed to match any hue, and come in seven sheens.